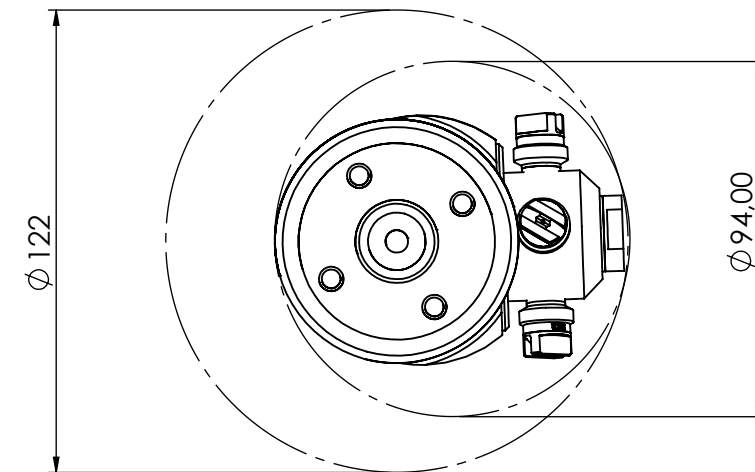
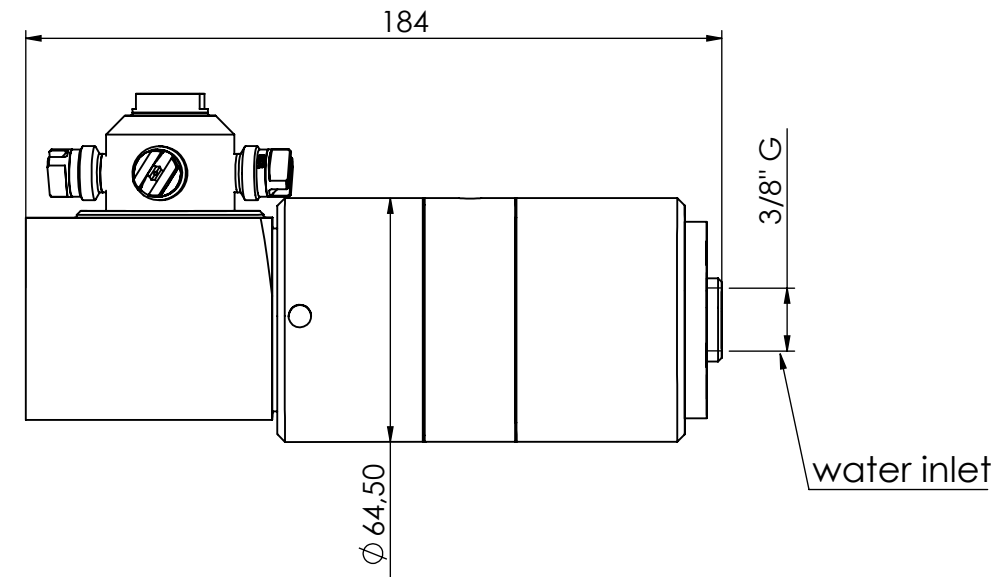



L/ MIN	UGELLO
10	1.1
15	1.5
20	1.9
25	2.3
30	2.7



#### TECHNICAL DATA

SLIPPER	PTFE +CARBON FIBRE
O-RING	NBR EPDM VITON
FILTER	700 MICRON
BUSHING	AISI 316
NOZZLES THREAD	1/8" NPT
NOZZLE POSITION	2 - 4
OPERATING FLOW RANGE	10 - 30 L/ min
TESTING PRESSURE	20 bar
CENTER LINE MIN PASS THROUGH	122 mm
OPERATING PRESSURE RANGE	5 - 150 bar
MAX OPERATING TEMPERATURE	90° C
MATERIAL	INOX AISI 316
GEAR'S MATERIALS OF PLANETARIES	IGLIDUR
CONICAL GEARS	ROTATING Z=48 FIXED=47
MANUAL MIN PASS THROUGH HOLE	94 MM
MODULE	1
FULL CYCLE	48 ROTATIONS
ROTATION SPEED RANGE	15 TO 25 rpm
WEIGHT	3 KG
FULL CYCLE TIME	2.4 min AT 20 rpm
SOME MINI INTERNAL'S COMPONENTS BLOCKED WITH:	LOCTITE 577

Progetto TESTA DI LAVAGGIO		Materiale INOX AISI 316	PESO [g] 3 KG
NOME TECHNICAL DATA		CODICE BW-090	
		DATA 02/07/2025	Scala 1:3 Foglio 1:1
			<b>B</b>